

**CONTROL TRANSFORMER PRIMARY CONNECTIONS**

INPUT VOLTS	TERMINALS	JUMPER LOCATION
230/240	(H1)	(H1) TO (H3)
460/480	(H1)	(H2) TO (H4)
600	(H1)	(H2) TO (H3)

**CONTROL TRANSFORMER PRIMARY CONNECTIONS (IF PRESENT)**

INPUT VOLTS	TERMINALS	JUMPER LOCATION
230/240	(H1)	(H1) TO (H3)
460/480	(H1)	(H2) TO (H4)
600	(H1)	(H2) TO (H3)

**BLOWER MOTOR FOR A1000 CONFIG.**

FLA RATING	AMPS	VOLTS
3.0	2.2 - 360	240
1.5	1.6 - 477	480
3.0	515 - 590	480
1.2	1.3 - 192	600

**OPTION TY HAND-OFF-AUTO SWITCH CONTACT SEQUENCE CHART FOR S2**

CONTACT	POSITION	MANUF. LOCATION / TYPE
1	HAND	X
2	OFF	X
3	AUTO	X

**OPTION TB CONTACT SEQUENCE CHART FOR S2**

CONTACT	POSITION	MANUF. LOCATION / TYPE
1	HAND	X
2	OFF	X
3	AUTO	X

**OPTION TV 120VAC INTERFACE**

WIRE RANGE	AWG
24-17	AWG

**OPTION TB BLOWER MOTOR STARTER**

WIRE RANGE	AWG
18-14	AWG

**OPTION PH 3% LOAD REACTOR**

WIRE RANGE	AWG
18-14	AWG

**OPTION PX 3% BUS REACTOR**

WIRE RANGE	AWG
18-14	AWG

**OPTION TY SPEED REFERENCE**

WIRE RANGE	AWG
4-20	AWG

**OPTION PH 3% LOAD REACTOR**

WIRE RANGE	AWG
18-14	AWG

**OPTION TY SPEED REFERENCE**

WIRE RANGE	AWG
4-20	AWG

**OPTION TB BLOWER MOTOR STARTER**

WIRE RANGE	AWG
18-14	AWG

**OPTION PH 3% LOAD REACTOR**

WIRE RANGE	AWG
18-14	AWG

**OPTION PX 3% BUS REACTOR**

WIRE RANGE	AWG
18-14	AWG

**OPTION TY SPEED REFERENCE**

WIRE RANGE	AWG
4-20	AWG

**OPTION PH 3% LOAD REACTOR**

WIRE RANGE	AWG
18-14	AWG

**OPTION TY SPEED REFERENCE**

WIRE RANGE	AWG
4-20	AWG

**OPTION TB BLOWER MOTOR STARTER**

WIRE RANGE	AWG
18-14	AWG

**OPTION PH 3% LOAD REACTOR**

WIRE RANGE	AWG
18-14	AWG

**OPTION PX 3% BUS REACTOR**

WIRE RANGE	AWG
18-14	AWG

**OPTION TY SPEED REFERENCE**

WIRE RANGE	AWG
4-20	AWG

**OPTION PH 3% LOAD REACTOR**

WIRE RANGE	AWG
18-14	AWG

**YASKAWA**

THIS DOCUMENT AND INFORMATION CONTAINED HEREIN IS CONFIDENTIAL AND NOT TO BE REPRODUCED OR DISCLOSED IN WHOLE OR IN PART WITHOUT THE EXPRESS WRITTEN CONSENT OF YASKAWA AMERICA, INC.

DATE: 9/4/12  
 DRAWING NO.: DS-A1C1.06  
 REVISIONS: D 04 1 of 2

**REVISIONS**

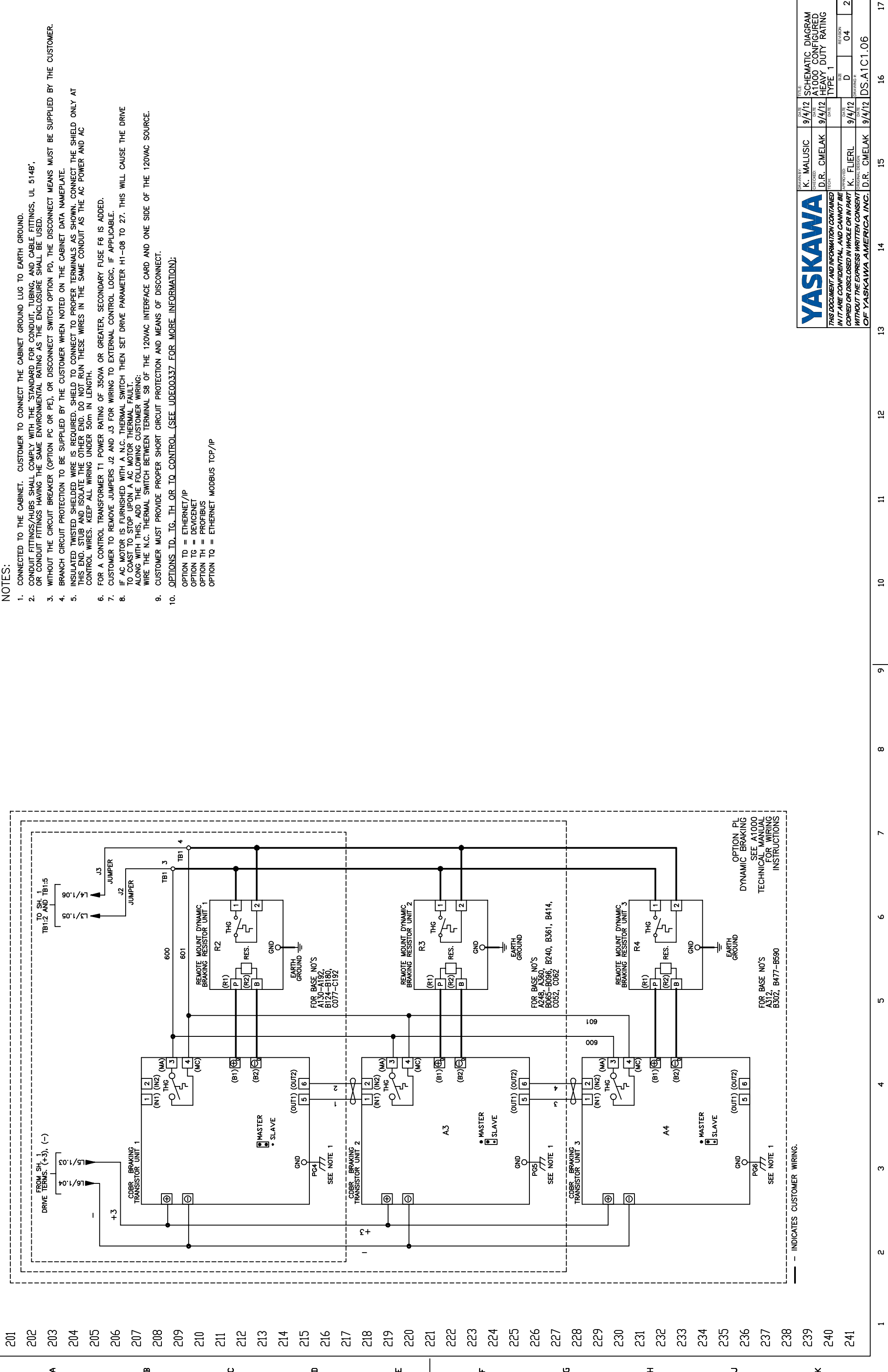
REV.	DESCRIPTION	ECO #	DATE	DRAWN BY
04	UPDATE CUSTOMER WIRING TO BOLD LINES	6620	10/07/15	DJP
03	ADDED FM, AM, MP TERMINALS TO DRIVE	6422	07/17/15	DJP

**SCHEMATIC DIAGRAM A1000 CONFIGURED HEAVY DUTY RATING**

DATE: 9/4/12  
 DRAWING NO.: DS-A1C1.06  
 REVISIONS: D 04 1 of 2

17 16 15 14 13 12 11 10 9 8 7 6 5 4 3 2 1

A B C D E F G H J K



201 202 203 204 205 206 207 208 209 210 211 212 213 214 215 216 217 218 219 220 221 222 223 224 225 226 227 228 229 230 231 232 233 234 235 236 237 238 239 240 241

**NOTES:**

1. CONNECTED TO THE CABINET. CUSTOMER TO CONNECT THE CABINET GROUND LUG TO EARTH GROUND.
2. CONDUIT FITTINGS/HUBS SHALL COMPLY WITH THE 'STANDARD FOR CONDUIT, TUBING, AND CABLE FITTINGS, UL 514B', OR CONDUIT FITTINGS HAVING THE SAME ENVIRONMENTAL RATING AS THE ENCLOSURE SHALL BE USED.
3. WITHOUT THE CIRCUIT BREAKER (OPTION PC OR PE), OR DISCONNECT SWITCH OPTION PD, THE DISCONNECT MEANS MUST BE SUPPLIED BY THE CUSTOMER.
4. BRANCH CIRCUIT PROTECTION TO BE SUPPLIED BY THE CUSTOMER WHEN NOTED ON THE CABINET DATA NAMEPLATE.
5. INSULATED TWISTED SHIELDED WIRE IS REQUIRED. SHIELD TO CONNECT TO PROPER TERMINALS AS SHOWN. CONNECT THE SHIELD ONLY AT THIS END. STUB AND ISOLATE THE OTHER END. DO NOT RUN THESE WIRES IN THE SAME CONDUIT AS THE AC POWER AND AC CONTROL WIRES. KEEP ALL WIRING UNDER 50m IN LENGTH.
6. FOR A CONTROL TRANSFORMER T1 POWER RATING OF 350VA OR GREATER, SECONDARY FUSE F6 IS ADDED.
7. CUSTOMER TO REMOVE JUMPERS J2 AND J3 FOR WIRING TO EXTERNAL CONTROL LOGIC, IF APPLICABLE.
8. IF AC MOTOR IS FURNISHED WITH A N.C. THERMAL SWITCH THEN SET DRIVE PARAMETER H1-08 TO 27. THIS WILL CAUSE THE DRIVE TO COAST TO STOP UPON A AC MOTOR THERMAL FAULT. ALONG WITH THIS, ADD THE FOLLOWING CUSTOMER WIRING: WIRE THE N.C. THERMAL SWITCH BETWEEN TERMINAL S8 OF THE 120VAC INTERFACE CARD AND ONE SIDE OF THE 120VAC SOURCE.
9. CUSTOMER MUST PROVIDE PROPER SHORT CIRCUIT PROTECTION AND MEANS OF DISCONNECT.
10. OPTIONS\_ID, TG, TH OR IQ CONTROL (SEE UDE00337 FOR MORE INFORMATION);

- OPTION TD = ETHERNET/IP
- OPTION TG = DEVICENET
- OPTION TH = PROFIBUS
- OPTION TQ = ETHERNET MODBUS TCP/IP

<b>YASKAWA</b>		DATE	9/4/12	TITLE	SCHEMATIC DIAGRAM
DRAWN BY	K. MALUSIC	DATE	9/4/12	DESIGNED BY	A1000 CONFIGURED
CHECKED BY	D.R. CMELAK	DATE	9/4/12	TECH	HEAVY DUTY RATING
APPROVED BY	K. FLIERL	DATE	9/4/12	SIZE	D
SCALE		REVISION #	04	SIZE	04
PROJECT #		DRAWING #		PAGE	2 of 2
WORK CENTER					
OF YASKAWA AMERICA, INC. D.R. CMELAK 9/4/12 DS-A1C1.06					